

**STANDARD DEPARTURE CHART  
INSTRUMENT (SID) - ICAO**

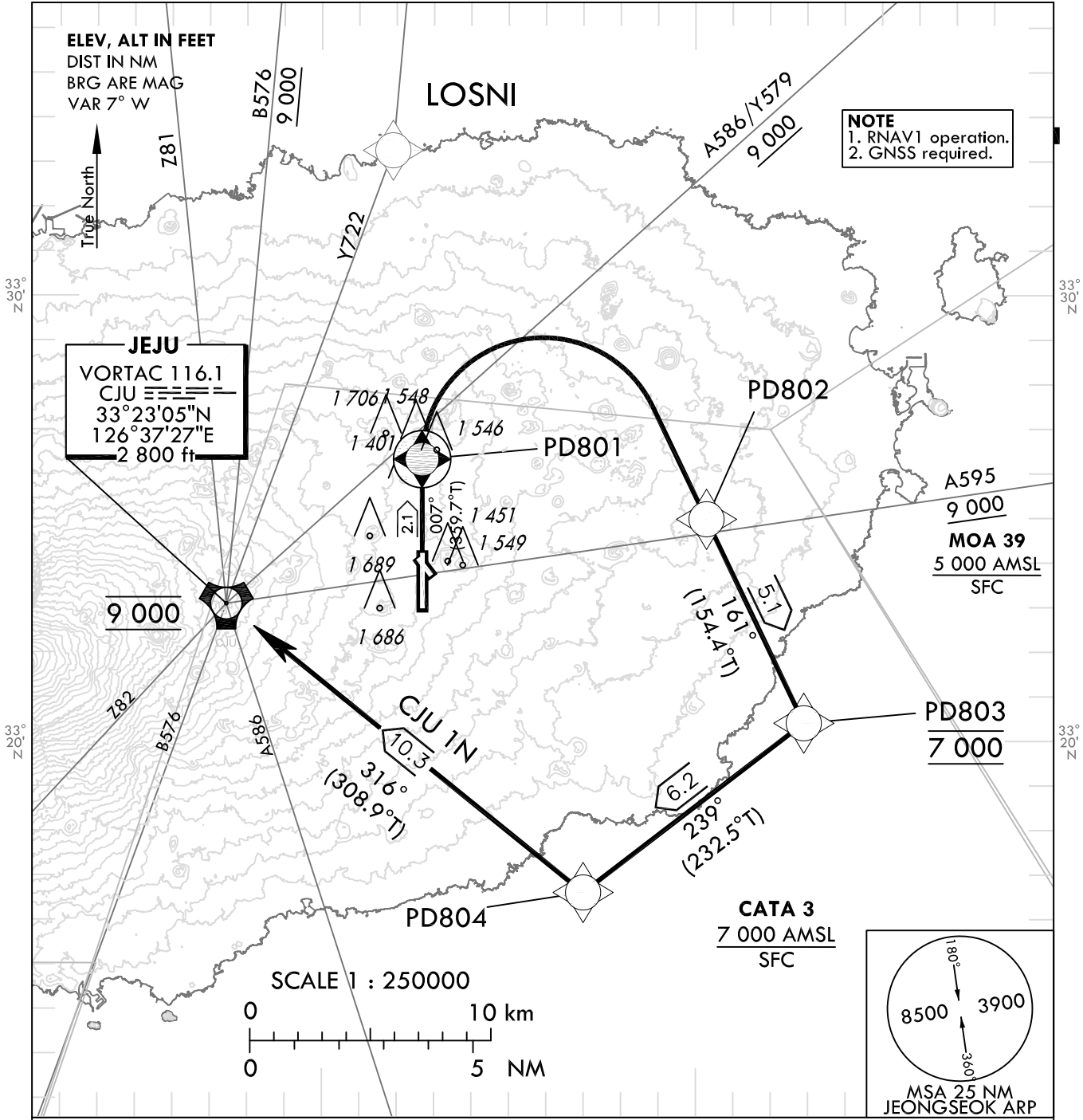
TRANSITION ALT 14 000  
TRANSITION LVL FL 140

JEJU	DEP	119.225
		121.2
JEONGSEOK TWR		124.35

**JEJU/Jeongseok(RKPD)  
RWY 01  
RNAV CJU 1N**

Note : Departure under ICAO flight procedures.

126°50'E



**GENERAL INFORMATION**

1. CJU 1N : 5.8% climb gradient required to 9 000 ft for ATC purpose and avoiding OBST.
2. If unable to comply with flight restrictions or RNAV 1, advise ATC well before departure for alternatives.
3. Departure turn limited to 210 kt IAS maximum until PD804.
4. Within JEJU TMA, maximum 250 kt IAS below 10 000 ft.

**RNAV CJU ONE NOVEMBER DEPARTURE** : PD801 - PD802 - PD803 - PD804 - CJU

Change : Information of Note 1(RNAV → RNAV1).

JEJU/Jeongseok(RKPD)  
RWY 01  
RNAV CJU 1N

AERONAUTICAL DATA TABULATION

Standard Instrument Departure Procedure Coding Tables

RNAV CJU 1T

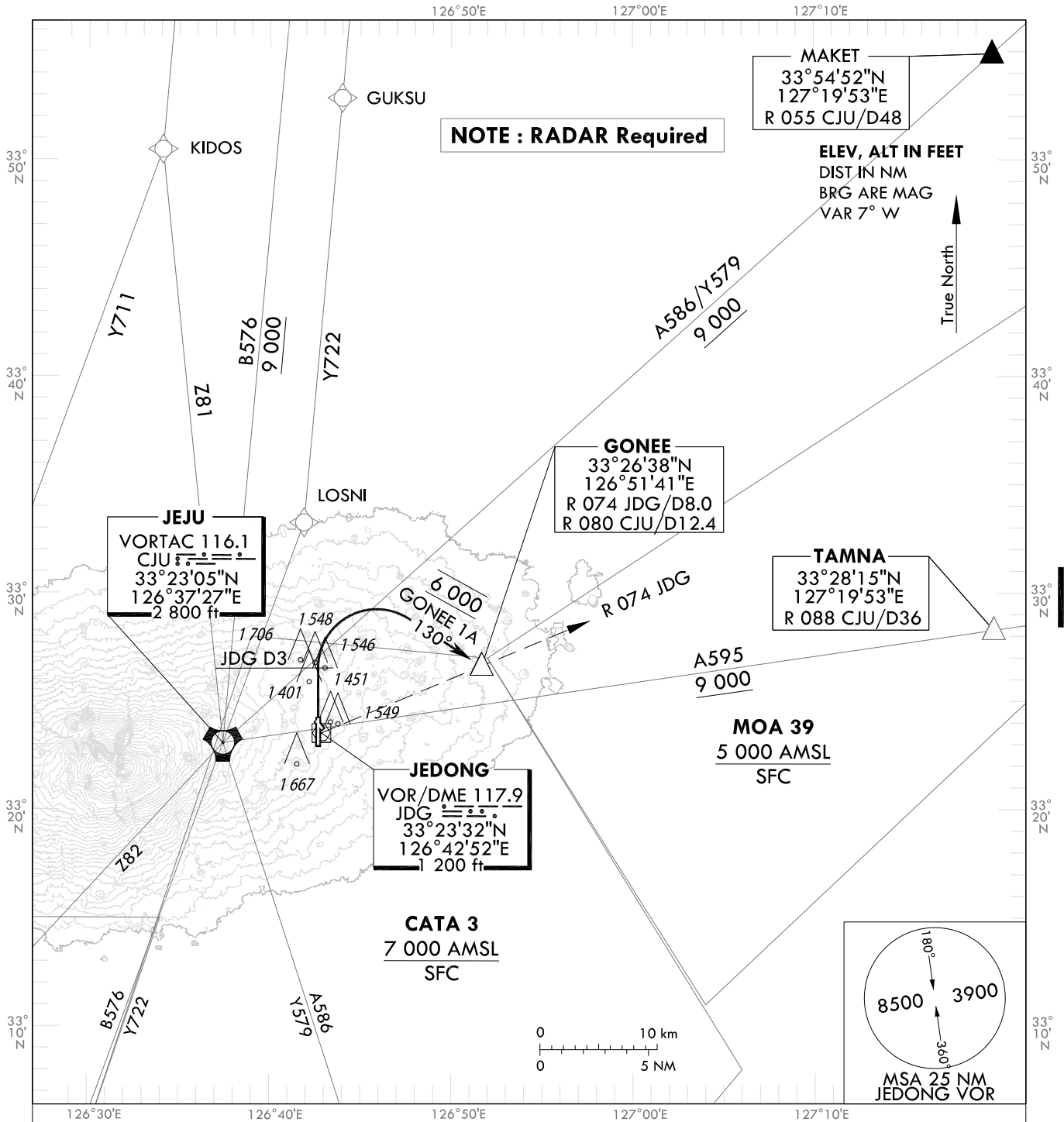
Serial Number	Path Descriptor	Waypoint Identifier	Fly-over	Course/Track °M(°T)	Distance (NM)	Turn direction	Altitude (ft)	Speed (kt)	Coordinates	VPA/TCH	Navigation specification	Remarks
001	CF	PD801	Y	007(359.7)	2.1	-	-	-210	33°26'19.3"N 126°42'40.6"E	-	RNAV 1	-
002	DF	PD802	-	-	-	R	-	-210	33°24'59.1"N 126°50'17.5"E	-	RNAV 1	-
003	TF	PD803	-	161(154.4)	5.1	-	@7 000	-210	33°20'24.7"N 126°52'54.0"E	-	RNAV 1	-
004	TF	PD804	-	239(232.5)	6.2	-	-	-210	33°16'36.5"N 126°47'00.5"E	-	RNAV 1	-
005	TF	PD805	-	316(308.9)	10.3	-	@9 000	-	33°23'04.6"N 126°37'26.8"E	-	RNAV 1	-

**STANDARD DEPARTURE CHART  
INSTRUMENT (SID) - ICAO**

TRANSITION ALT 14 000  
TRANSITION LVL FL 140

JEJU DEP 119.225  
JEONGSEOK TWR 124.35

**JEJU/Jeongseok(RKPD)  
RWY 01  
GONEE 1A**



**GENERAL INFORMATION**

1. Minimum climb gradient 7.2% to 6 000 ft for ATC purpose and 5.5% to 2 100 ft for avoiding OBST.
2. If unable to comply with flight restrictions, advise ATC before departure for alternatives.
3. Departure turn limited to 210 kt IAS maximum.
4. Within JEJU TMA, maximum 250 kt IAS below 10 000 ft.

**GONEE ONE ALPHA DEPARTURE**

TAKE OFF RWY 01 : Climb on RWY HDG until JDG D3, turn right HDG 130° to intercept R 074 JDG, proceed to GONEE at 6 000 ft, then as directed by ATC. Maintain 6 000 ft until instructed by ATC.

Change : Establishment of SID final altitude on plan view.

**INTENTIONALLY**

**LEFT**

**BLANK**

**STANDARD DEPARTURE CHART  
INSTRUMENT (SID) - ICAO**

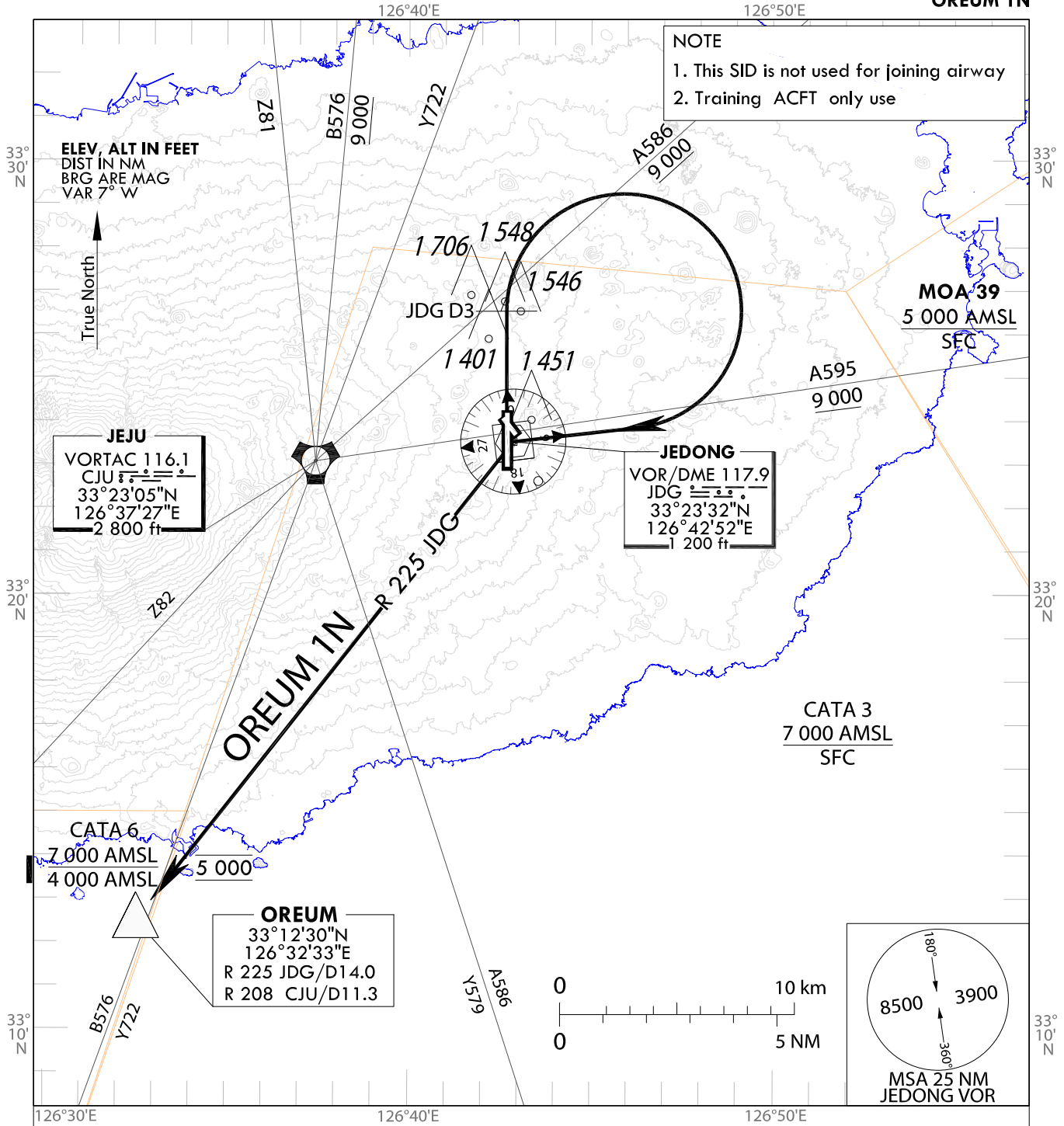
TRANSITION ALT 14 000  
TRANSITION LVL FL 140

JEJU DEP 119.225  
JEONGSEOK TWR 124.35

**JEJU/Jeongseok(RKPD)**

**RWY 01**

**OREUM 1N**



**GENERAL INFORMATION**

1. Minimum climb gradient 5.4% required to 5 000 ft for ATC purpose and avoiding OBST.
2. If unable to comply with flight restrictions, advise ATC before departure for alternatives.
3. Departure turn limited to 210 kt IAS maximum.
4. Within JEJU TMA, maximum 250 kt IAS below 10 000 ft.

**OREUM ONE NOVEMBER DEPARTURE**

TAKE OFF RWY 01 : Climb on RWY HDG until JDG D3, turn right direct to JDG, then proceed on R 225 JDG to OREUM at 5 000 ft, then as directed by ATC. Maintain 5 000 ft until instructed by ATC.

Change : Establishment of SID final altitude on plan view.

**INTENTIONALLY**

**LEFT**

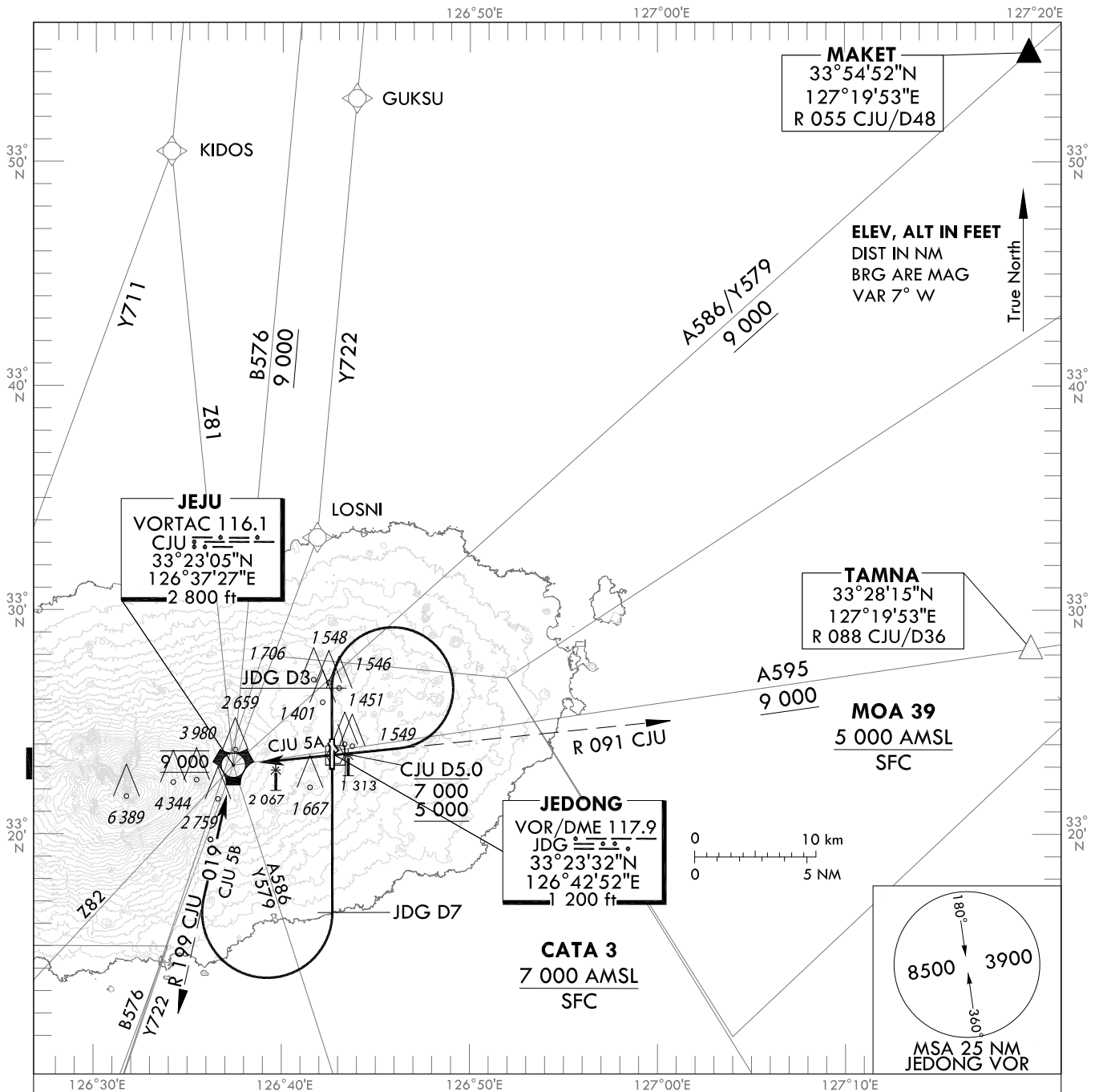
**BLANK**

**STANDARD DEPARTURE CHART  
INSTRUMENT (SID) - ICAO**

TRANSITION ALT 14 000  
TRANSITION LVL FL 140

JEJU DEP 119.225  
JEONGSEOK TWR 124.35

**JEJU/Jeongseok(RKPD)  
RWY 01 CJU 5A  
RWY 19 CJU 5B**



**GENERAL INFORMATION**

1. CJU 5A : 7.9% climb gradient required to 9 000 ft for ATC purpose and 5.4% to 2 700 ft for avoiding OBST.
2. CJU 5B : 6.5% climb gradient required to 9 000 ft for ATC purpose and 5.4% to 5 300 ft for avoiding OBST.
3. If unable to comply with flight restrictions, advise ATC before departure for alternatives.
4. Departure turn limited to 210 kt IAS maximum.
5. Within JEJU TMA, maximum 250 kt IAS below 10 000 ft.

**JEJU FIVE ALPHA DEPARTURE**

TAKE OFF RWY 01 : Climb on RWY HDG until JDG D3, turn right to intercept R 091 CJU, then proceed to CJU. Cross R 091/D5.0 CJU between 5 000 ft and 7 000 ft, CJU at 9 000 ft. Maintain 9 000 ft until instructed by ATC.

**JEJU FIVE BRAVO DEPARTURE**

TAKE OFF RWY 19 : Climb on RWY HDG until JDG D7, turn right to intercept R 199 CJU, then proceed to CJU at 9 000 ft. Maintain 9 000 ft until instructed by ATC.

Change : Establishment of SID final altitude on plan view.

**INTENTIONALLY**

**LEFT**

**BLANK**

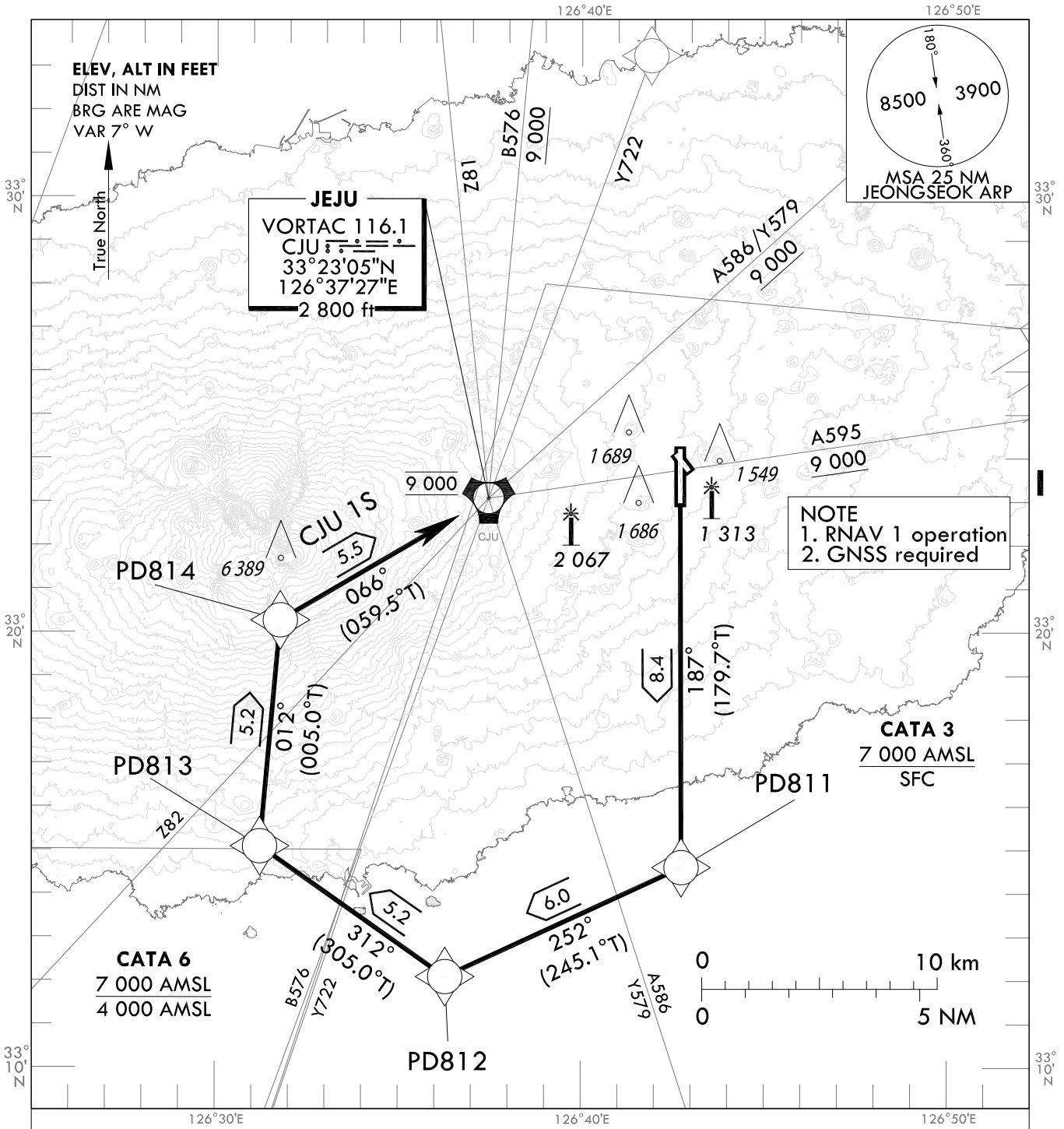


STANDARD DEPARTURE CHART  
INSTRUMENT (SID) - ICAO

TRANSITION ALT 14 000  
TRANSITION LVL FL 140

JEJU APP 124.05  
JEONGSEOK TWR 124.35

JEJU/Jeongseok(RKPD)  
RWY 19  
RNAV CJU 15



**GENERAL INFORMATION**

1. CJU 1S : 5.9% climb gradient required to 9 000 ft for ATC purpose and avoiding OBST.
2. If unable to comply with flight restrictions or RNAV 1, advise ATC before departure for alternatives.
3. Departure turn limited to 210 kt IAS maximum until PD814.
4. Within JEJU TMA, maximum 250 kt IAS below 10 000 ft.

**RNAV CJU ONE SIERRA DEPARTURE** : PD811 - PD 812 - PD813 - PD814 - CJU

Change : Establishment of SID final altitude on plan view.

JEJU/Jeongseok AD(RKPD)  
RWY 19  
RNAV CJU 1S

AERONAUTICAL DATA TABULATION

Standard Instrument Arrival Procedure Coding Tables

**RNAV CJU 1S**

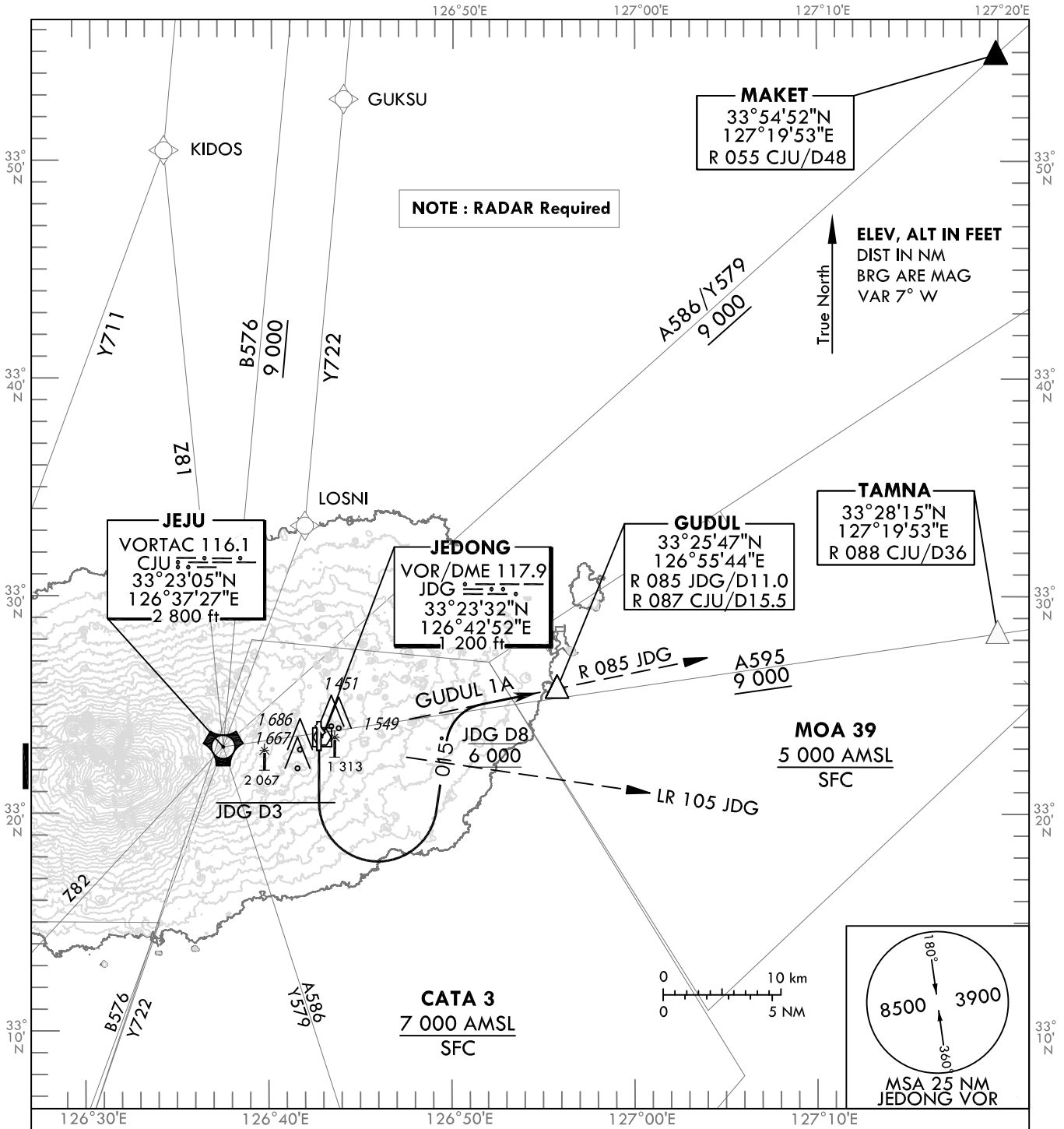
Serial Number	Path Descriptor	Waypoint Identifier	Fly-over	Course/Track °M(°T)	Distance (NM)	Turn direction	Altitude (ft)	Speed (kt)	Coordinates	VPA/TCH	Navigation specification	Remarks
001	CF	PD811	-	187(179.7)	8.4	-	-	-210	33°14'36.2"N 126°42'44.6"E	-	RNAV 1	-
002	TF	PD812	-	252(245.1)	6.0	-	-	-210	33°12'05.0"N 126°36'17.4"E	-	RNAV 1	-
003	TF	PD813	-	312(305.0)	5.2	-	-	-210	33°15'04.4"N 126°31'12.8"E	-	RNAV 1	-
004	TF	PD814	-	012(005.0)	5.2	-	-	-210	33°20'15.8"N 126°31'45.3"E	-	RNAV 1	-
005	TF	CJU	-	066(059.5)	5.5	-	@9 000	-	33°23'04.6"N 126°37'26.8"E	-	RNAV 1	-

STANDARD DEPARTURE CHART  
INSTRUMENT (SID) - ICAO

TRANSITION ALT 14 000  
TRANSITION LVL FL 140

JEJU APP 119.225  
JEONGSEOK TWR 124.35

JEJU/Jeongseok(RKPD)  
RWY 19  
GUDUL 1A



**GENERAL INFORMATION**

1. Minimum climb gradient 6.3% to 6 000 ft for ATC purpose and avoiding OBST.
2. If unable to comply with restrictions, advise ATC before departure for alternatives.
3. Departure turn limited to 210 kt IAS maximum.
4. Within JEJU TMA, maximum 250 kt IAS below 10 000 ft.

**GUDUL ONE ALPHA DEPARTURE**

**TAKE OFF RWY 19 :** Climb on RWY HDG until JDG D3, turn left HDG 015° to intercept R 085 JDG.  
proceed to GUDUL at 6 000 ft, then as directed by ATC. Reach at 6 000 ft until passing JDG D8.  
Maintain 6 000 ft until instructed by ATC.

Change : Establishment of wind turbine.

**INTENTIONALLY**

**LEFT**

**BLANK**

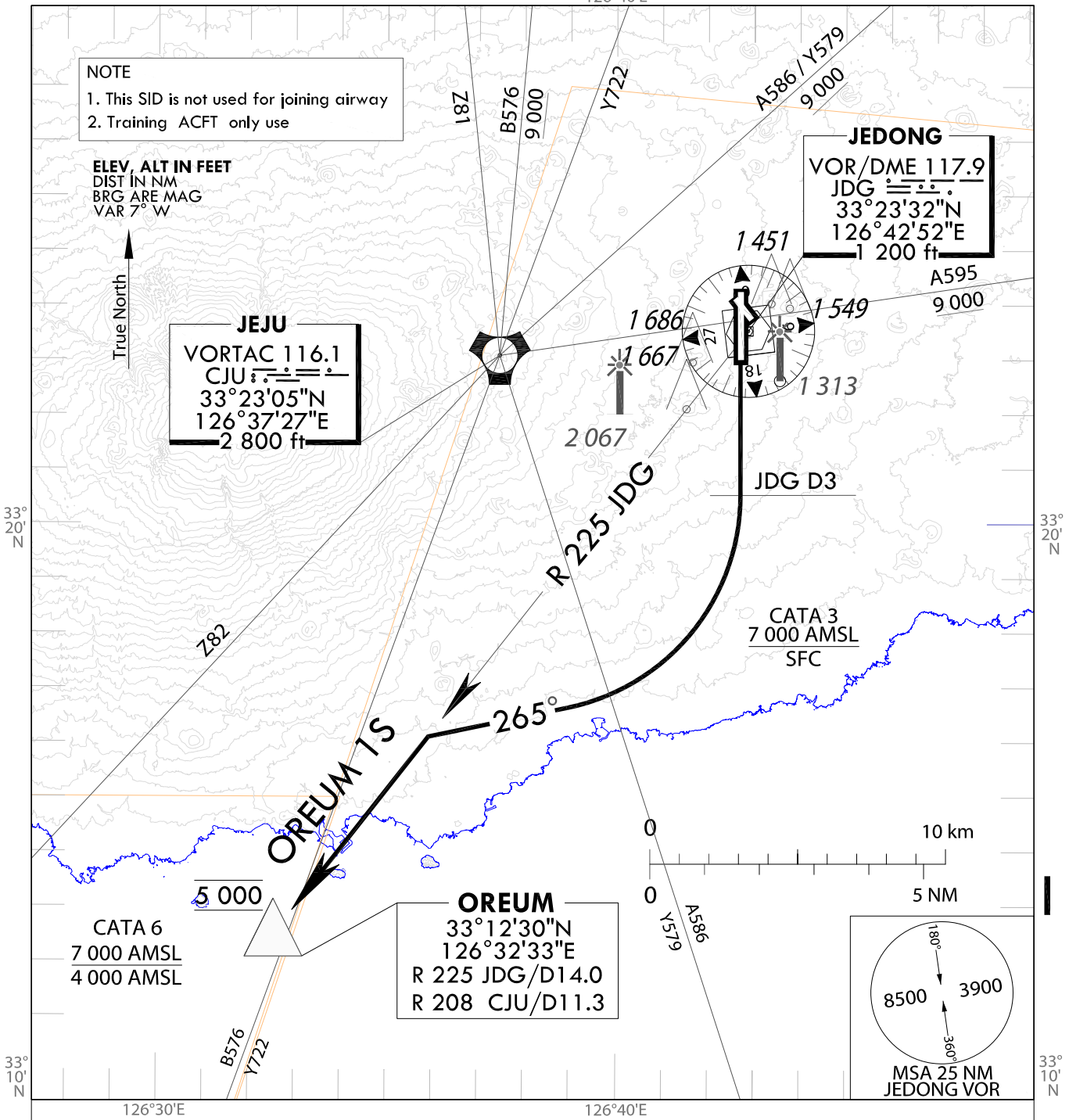
**STANDARD DEPARTURE CHART  
INSTRUMENT (SID) - ICAO**

TRANSITION ALT 14 000  
TRANSITION LVL FL 140

JEJU DEP 119.225  
JEONGSEOK TWR 124.35

**JEJU/Jeongseok(RKPD)**

**RWY 19  
OREUM 1S**



**GENERAL INFORMATION**

1. Minimum climb gradient 4.5% required to 5 000 ft for ATC purpose and avoiding OBST.
2. If unable to comply with flight restrictions, advise ATC before departure for alternatives.
3. Departure turn limited to 210 kt IAS maximum.
4. Within JEJU TMA, maximum 250 kt IAS below 10 000 ft.

**OREUM ONE SIERRA DEPARTURE**

TAKE OFF RWY 19 : Climb on RWY HDG until JDG D3, turn right HDG 265° to intercept R 225 JDG, then proceed to OREUM at 5 000 ft. then as directed by ATC. Maintain 5 000 ft until instructed by ATC.

Change : Establishment of SID final altitude on plan view.

**INTENTIONALLY**

**LEFT**

**BLANK**